

FIREPRO

FIRE PROTECTIVE BUILDING PRODUCTS

HEAD OFFICE: AUCKLAND (09) 579 0367
WELLINGTON (04) 568 7086 • CHRISTCHURCH (03) 379 9364
www.firepro.co.nz sales@firepro.co.nz

CI/SfB

B360, B361 DATASHEET - AUG08

Product specifications can change. Contact us to ensure you have our latest datasheet

FIRE RATED ELECTRICAL FLUSH BOXES AND INSERTS

B362 Electrical Flush Boxes

are designed to provide up to 2 hours (B362) Fire Resistance Rating when correctly installed in a plaster board or concrete wall of the equivalent fire resistance.

The Flush Boxes have an intumescent pad that swells up in a fire to fill the box with insulating material.

The Flush Boxes may be installed from either side of the fire or in a "back to back" configuration. Both double and single boxes are available.

B362 are fire tested to AS1530:4 (1997) and BS476:22 in both one hour FRR and 2 hour FRR walls.

B360 Intumescent Insert Pads

When the intumescent insert pad for the B362 Flush Box is sold without the metal box for use in pre-installed 48mm or less deep steel boxes it is coded B360.

Stock sizes: B360S 50mm x 75mm, B360D 95 x 75mm, special sizes can be manufactured.

INSTALLATION B362

FOR MASONRY WALL INSTALLATION:

The box is grouted into the wall in the normal way.

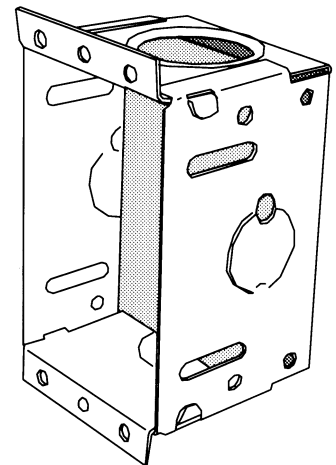
For PLASTERBOARD WALL INSTALLATION:

Attach firmly to frame with at least 2 weld points on steel frames or nails on timber frames.

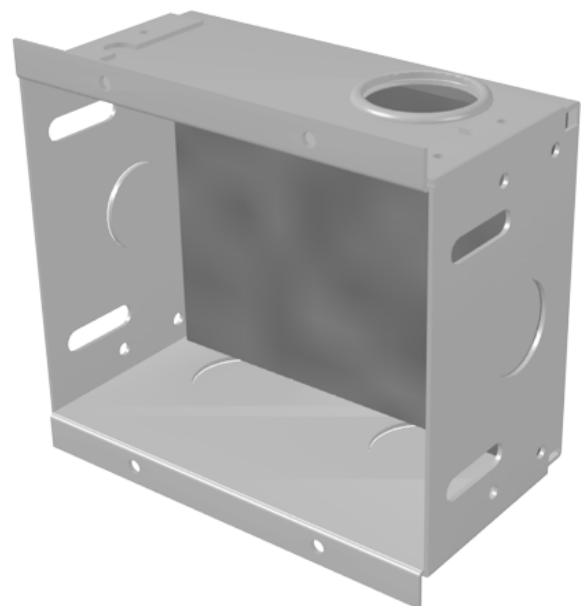
Box must be firm and flush with edge of plasterboard.

After application on plaster, seal any gaps around the front edge of box and plasterboard with a 10mm bead of Firepro M707 fire protective mastic.

Finish electrical connections and screw on face plate.



B362 Single Fire Rated Flush Box



B362 Double Fire Rated Flush Box

NOTE: The technical information and suggestions for use and application presented herein represent the best information available to us and are believed to be reliable. They should not however be construed as controlling suggestions and there is no warranty of performance of our materials either expressed or implied. We urge that users of our materials conduct confirmatory tests to determine final suitability for their specific end uses. All dimensions are nominal. We reserve the right to make changes or to withdraw designs and products without notice.